



Indoor and outdoor
vacuum circuit breaker series

www.wzebl.com BROWSE

Indoor high voltage vacuum circuit breaker/fixd type

To fine sincerity /
services



VS1-12

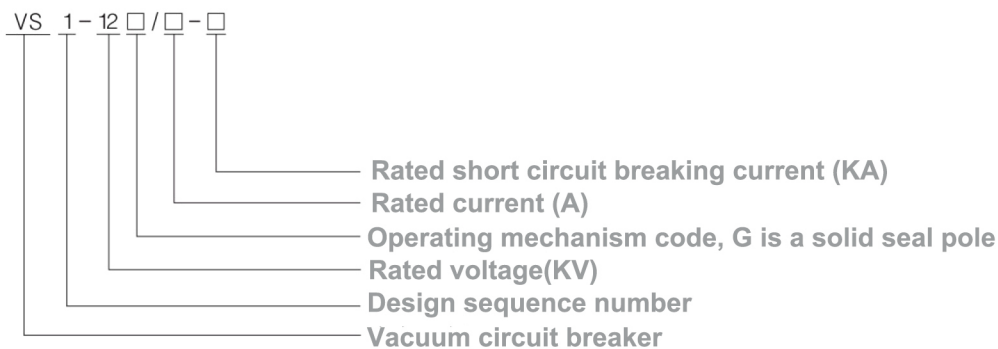
Indoor hight voltage vacuum circuit breaker

Summarize

VS1-12 series indoor fixed high-voltage vacuum circuit breaker is an indoor switchgear with three-phase AC 50HZ and rated voltage 12KV. It can be used for the control and protection of industrial and mining enterprises, power plants and substations, and electrical facilities, and is suitable for Places with frequent operations. The operating mechanism is integrated with the circuit breaker body. The design can be used as a fixed installation unit, or it can be equipped with a special propulsion mechanism to form a special propulsion mechanism and be used as a handcart unit. The main circuit part can use integrally sealed poles to achieve miniaturization, high reliability and maintenance-free circuit breaker. It can be equipped with center-mounted handcart switch cabinets such as KYN28A-12 (GZS), and the fixed type can also be equipped with XGN Series of fixed switch cabinets.

Model meaning

VS 1-12 □ / □ - □



Normal use environment:

Ambient temperature: not higher than 40°C, not lower than -10°C (allowed at -30°C storage and transportation);

Altitude: not more than 1000m(if it is necessary to increase the altitude, the rated insulation level will be increased accordingly);

Relative humidity: the daily average is not more than 95%, the daily average of saturated vapor pressure is not more than 2.2kPa, the monthly average is not more than 1.8kPa;

Earthquake intensity: not more than 8

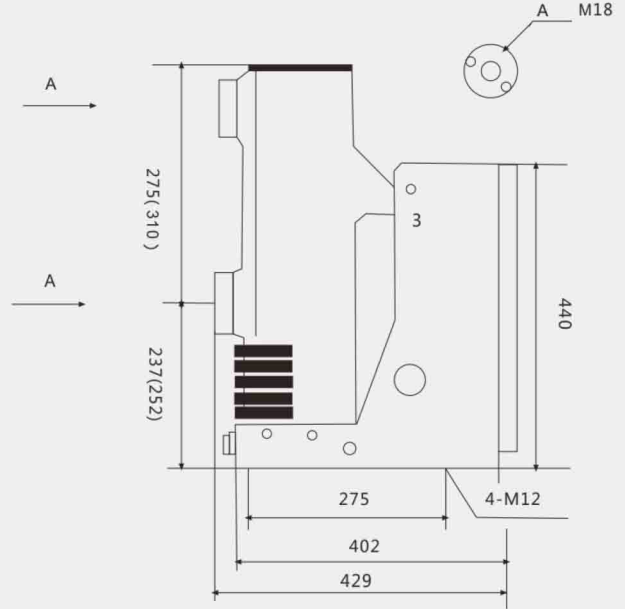
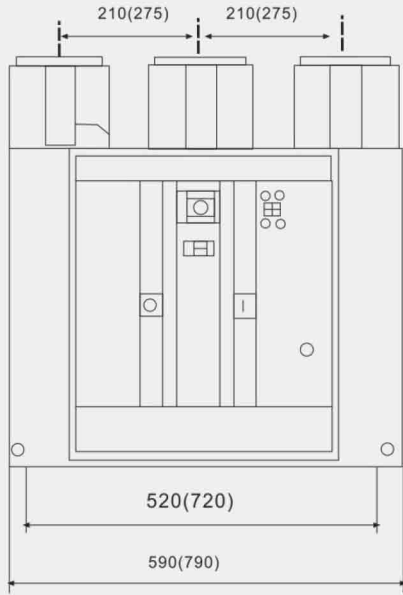
Place free from fire, explosion, serious pollution, chemical corrosion and violent vibration.

main technical parameters

Name		Unit	Parameter		
Rated voltage		kV	12		
maximum working voltage		kV	12		
Rated current		A	630 1250	630 1250 1600 2000 2500 3150	1250 1600 2000 2500 3150 4000
Rated short-circuit breaking current (rated thermal stable current - RMS)		kA	20/25	31.5	40
Rated short circuit closing current (peak)		kA	50/63	80	100
Rated peak withstand current (rated dynamic stable current -- peak value)		kA	50/63	80	100
4s rated short-circuit withstand current		kA	20/25	31.5	40
Rated insulation level	Working voltage (rated before and after breaking) / 1min power frequency withstand voltage	kV	Ground 42 (fracture 48)		
	Impulse withstand voltage (rated before and after breaking) / Peak rated lightning impulse withstand voltage		Ground 75(fracture 85)		
Rated thermal stability time		s	4		
Rated operating sequence			Opening-0.3s-opening closing-180s-opening closing		
mechanical life		times	20000		
Rated short circuit breaking current breaking times		times	50		
Rated closing voltage of operating mechanism (DC)		V	AC 、 DC 110, 220		
Rated switching voltage of operating mechanism (DC)		V	AC 、 DC 110, 220		
clearance between open contacts		mm	11 ± 1		
overstroke((contact spring compression length)		mm	3.5 ± 0.5		
Three phase,opening closing bounce time		ms	≤2		
Contact closing bounce time		ms	≤2		
Average opening speed		m/s	0.9~1.2		
Average closing speed		m/s	0.5~0.8		
Opening time	At the highest operating voltage	s	≤0.05		
	At the lowest operating voltage	s	≤0.08		
closing time		s	0.1		
Main circuit resistance of each phase		μΩ	630≤50	1250≤45	
Allowable wear accumulation thickness of dynamic and static contacts		mm	3		

outline overall and installing dimensions

The brackets are 275MM apart



VS1-12/2000~4000(1000 Cabinet)

