



Company profile:

WenZhou ENBOLI Electric co., Ltd was established in 1998. The company's existing industrial park is 30 acres and the factory area is 70,000 square meters. Its subsidiaries are engaged in power transformers below 110KV, high-voltage components below 110KV, complete sets of electrical appliances below 35KV, power fittings, wires and cables, fuses, distribution boxes and other power transmission and distribution products.



The company has 1,200 employees, including 50 managers and 12 technicians. The annual production amount reaches 380 million. The key processes of the products use automatic monitoring instruments and equipment, and advanced SAP management software is introduced to digitally manage the production and operation process.

The company has KEMA international certification, ISO9001 quality management system certification, IOS14001 environmental management system certification, OHSAS18001 occupational health and safety management and other system certifications, and has passed the International Electrotechnical Association (IEC) CE, American TUL and other international system certifications.





恩波利
ENBOLI

Production workshop

The first-class talent, first-class technology, first-class facilities and a first-class management system forward a first-class production line. In order to ensure a highly efficient operation of the first production line, the company adopts multimodes and multi-means of management to enhance the working efficiency. We train the technical personnel to perfect equipment operation and advance automatic technology skills. We also actively implement the "6S" policy to energize logistics management and the effectiveness of each post, forming a common awareness of efficient and high-quality production, so as to promote the development of economic system of our company.



Assembly workshop



Core Workshop



Winding Workshop



H.V Testing Hall



SINGLE-PHASE POLE MOUNTED TRANSFORMER

Features of Products

The single-phase pole-mounted distribution transformers are specifically designed for the decentralization distribution network of servicing residential overhead distribution loads of town and countryside.

They are also suitable for light and diversified power applications. These transformers are designed for the application conditions normally encountered on electric utility power distribution systems.

Offers 2 basic transformer types and two kinds of metal core types: Conventional type and Complete Self Protect type, and for the transformer core.

Two types of materials are available: C.R.G.O. wound core and amorphous metal core.

Standard

GB1094.1-2013; GB1094.2-2013; GB1094.3-2003; GB1094.5-2008; GB/T 1094.10-2003; JB/T 10317-2002; IEEE Std C57.12.00™ -2010; IEEE Std C57.12.90™ -2010; ANSI C57.12.00 C57.12.20; IEC60076; SANS 780 STANDARDS.

Features of Products

1. Meet or exceeds ANSI, IEC, GB, SANS Standards
2. Safe Handling, Installation and Operation.
3. Attractive, modern appearance
4. Reasonable Structure
5. Fully-sealed
6. Higher system reliability
7. High security and reliability in operation
8. High capacity of overload and efficient
9. Robust construction having excellent short circuit and thermal withstand capabilities

D10 series 11kV single phase pole-mounted distribution transformer

Rating (kVA)	Voltage group		Vector group	Impedance voltage	Loss		No-load current (%)	Weight(kg)			(L×B×H) (mm) Outline dimension	Gauge vertical/horizontal				
	High-Voltage	Low-voltage			No-load	Load		Machine weight	Oil weight	Gross weight						
5	11	0.22	li0	3.5	35	145	4	50	40	130	530×450×550	400/250				
10					55	260	3.5	65	40	150	560×450×870	400/300				
16					65	365	3.2	80	40	180	600×450×920	400/300				
20					80	430	3.0	100	50	205	620×450×940	400/300				
30					100	625	2.5	115	50	225	700×450×980	400/300				
40					10.5	0.24	li6	3.5	125	775	2.5	150	55	270	700×480×1040	400/300
50					10				150	950	2.3	175	70	310	650×510×1100	400/300
63					6.3				180	1135	2.1	190	80	340	660×520×1100	400/300
80					6				200	1400	2.0	240	100	420	770×530×1120	450/300
100									240	165	1.9	295	100	490	840×600×1150	450/300
125									285	1950	1.8	370	110	560	890×740×1160	500/400
160									365	2365	1.7	430	130	650	950×790×1170	500/400

Single phase oil immersed pole-mounted transformer

Rating (kVA)	HV(kV)	Tapping Range (%)	LV(kV)	Loss(kW)		Weight(kg)	
				No Load Loss	Full Load Loss	Oil Weight	Total Weight
15	33/19 30/17.32 13.2/7.62 11/6.35	±2×2.5% or other	0.12 0.24 0.48 or 0.12-0.24 0.24-0.48	0.03	0.195	45	294
25				0.05	0.4	68	362
37.5				0.65	0.5	75	476
50				0.8	0.6	93	553
75				0.12	0.88	132	672
100				0.21	1.12	141	742
167				0.35	1.41	207	952
250				0.5	2.0	375	1386

Note: For special requirements and technical problems please contact the company's technology department.



S10 SERIES 11KV CLASS DISTRIBUTION TRANSFORMER

Features of Products

S10 transformer is a 11kV class S10 series fully sealed transformer. It introduces the new technology of Shenyang Transformer Research Institute and adopts a fully oil-filled sealed type without oil storage cabinet. The transformer changes its oil body due to changes in temperature and load, which is completely regulated by the elasticity of the transformer oil tank.

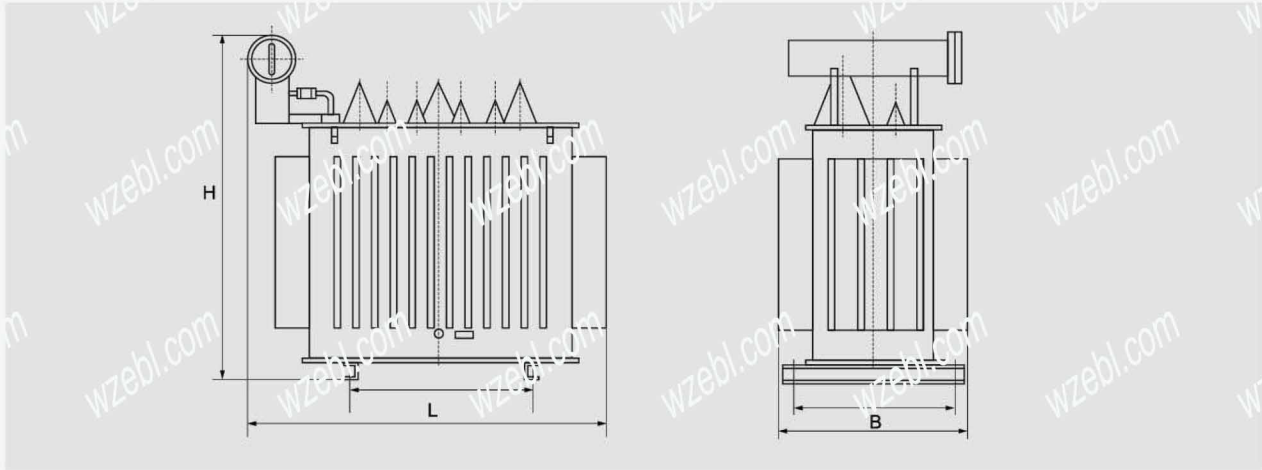
Standards

GB1094.1-2013; GB1094.2-2011; GB1094.3-2013; GB1094.5-2008; GB16451-2008; GB/T 1994.10-2003; JB/T 10088-2004 IEC60076; SANS 780 STANDARDS

Features of Products

1. Meet or exceeds ANSI/IEC/GB/SANS Standards
2. Safe Handling, Installation and Operation.
3. Attractive and modern appearance
4. Reasonable Structure
5. Fully-sealed
6. Higher system reliability
7. High security and reliability in operation
8. High capacity of overload and efficiency
9. Robust construction having excellent short circuit and thermal withstand capabilities

S10 series three phase distribution transformer



S10, S10-M series 11kV distribution transformer technical data

Rated capacity (kVA)	Voltage group (kV)		Vector group	Impedance voltage (%)	Loss (kW)		No-load current (%)	Weight(kg)			(L×B×H)(mm) Outline dimension	Gauge vertical/horizontal (mm)
	High-voltage	Low-voltage			No-load	Load		Machine weight	Oil weight	Gross weight		
5	13.8	0.4	Yyno	4	0.07	0.35	4	50	45	145	550×450×800	400/350
10					0.09	0.40	3.5	70	55	165	550×450×800	400/350
20					0.11	0.52	3.0	110	66	235	660×505×850	400/350
30					0.13	0.63/0.6	2.3	130	65	265	660×530×870	450/340
50					0.17	0.91/0.87	2.0	195	80	365	740×600×930	450/380
63					0.20	1.09/1.04	1.9	230	80	400	720×620×1000	450/380
80					0.25	1.31/1.25	1.9	260	95	460	770×640×1030	450/430
100					0.29	1.58/1.5	1.8	300	95	510	820×710×970	550/450
125					0.34	1.89/1.8	1.7	335	115	585	1040×680×1080	550/470
160					0.40	2.31/2.2	1.6	405	130	685	1090×670×1130	550/520
200					0.48	2.73/2.6	1.5	490	150	810	1160×760×1090	550/520
250					0.56	3.2/3.05	1.4	565	170	935	1215×775×1180	650/550
315					0.67	3.83/3.65	1.4	655	200	1095	1345×890×1205	650/550
400					0.80	4.52/4.3	1.3	840	250	1385	1450×935×1240	650/550
500					0.96	5.41/5.15	1.2	935	235	1505	1410×970×1290	750/600
630					1.20	6.2	1.1	1100	330	1830	1595×1040×1315	850/660
800	1.40	7.5	1.0	1360	370	2225	1765×1170×1350	850/660				
1000	1.70	10.3	1.0	1455	475	2555	1855×1255×1490	850/660				
1250	1.95	12.0	0.9	1715	545	3140	1885×1270×1590	850/660				
1600	2.40	14.5	0.8	2095	630	3680	1950×1620×2020	850/700				
2000	2.80	19.8	0.8	2340	715	4190	2060×1740×2050	820/820				
2500	3.30	23.0	0.7	2920	830	5100	2250×1800×2100	1070/1070				

Note: Tapping range of high-voltage: ±5%, ±2×2.5%; Frequency: 50Hz



S11 SERIES 11KV CLASS DISTRIBUTION TRANSFORMER

Features of Products

S11 transformer is a 11kV class S11 series fully sealed transformer. It introduces the new technology of Shenyang Transformer Research Institute and adopts a fully oil-filled sealed type without oil storage cabinet. The transformer changes its oil body due to changes in temperature and load, which is completely regulated by the elasticity of the transformer oil tank.

Standards

GB1094.1-2013; GB1094.2-2013; GB1094.3-2013; GB1094.5-2008; GB/T 6451-2008; GB/T 1984-2003; JB/T 10388-2004
IEC60076; SANS 780 STANDARDS

Features of Products

1. Meet or exceeds ANSI/IEC, GB, SANS Standards
2. Safe Handling, Installation and Operation.
3. Attractive and modern appearance
4. Reasonable Structure
5. Fully-sealed
6. Higher system reliability
7. High security and reliability in operation
8. High capacity of overload and efficiency
9. Robust construction having excellent short circuit and thermal withstand capabilities

Transformer normal service conditions

1. The height above the sea level is below 1000m;
2. Ambient temperature;
3. Highest air temperature +40°C ;
4. Highest daily average air temperature+30°C ;
5. Highest annual average air temperature +20°C ;
6. Lowest outdoor air temperature -25°C ;

S11、S11-M series 11kV distribution transformer technical data

Rated capacity (kVA)	Voltage group (kV)		Vector group	Impedance voltage (%)	Loss(kW)		No-load current (%)	Weight(kg)			Outline dimension (L×B×H)(mm)	Gauge vertical/horizontal (mm)
	High Voltage	Low-Voltage			No-load	Load		Machine weight	Oil weight	Gross weight		
10	13.8	0.4	Yyn0	4	0.065	0.4	3.5	90	55	220	650×450×880	400/350
20					0.08	0.52	3.0	140	60	270	720×490×950	400/350
30					0.1	0.63/0.6	2.3	135	70	310	750×490×970	450/340
50					0.13	0.91/0.87	2.0	260	80	430	770×550×1030	450/380
63					0.15	1.09/1.04	1.9	260	85	440	800×600×1040	450/380
80					0.18	1.31/1.25	1.9	320	95	520	790×600×1070	450/430
100					0.2	1.58/1.5	1.8	355	100	570	830×640×1050	550/450
125					0.24	1.89/1.8	1.7	425	115	675	1070×700×1150	550/470
160					0.28	2.31/2.2	1.6	510	130	790	1120×700×1220	550/520
200					0.34	2.73/2.6	1.5	550	145	850	1080×690×1160	550/520
250	0.4	3.2/3.05	1.4	630	165	985	1160×740×1190	650/550				
315	0.48	3.83/3.65	1.4	755	190	1155	1230×800×1240	650/550				
400	0.57	4.52/4.3	1.3	910	225	1405	1310×860×1250	650/550				
500	0.68	5.41/5.15	1.2	1050	240	1600	1370×860×1350	750/600				
630	0.81	6.2	1.1	1250	310	1945	1580×1060×1310	850/660				
800	0.96	7.5	1.0	1540	365	2350	1640×1060×1500	850/660				
1000	1.25	10.3	1.0	1690	405	2645	1720×1160×1540	850/660				
1250	1.36	12.0	0.9	1965	560	3230	1790×1190×1740	850/660				
1600	1.64	14.5	0.8	2355	650	3805	1830×1210×1850	850/700				
2000	1.96	19.8	0.8	2570	615	4245	2190×1900×1950	820/820				
2500	2.31	23.0	0.7	3130	810	5280	2180×1940×2250	1070/1070				

Note: Tapping range of high-voltage: ±5%, ±2×2.5%; Frequency: 50Hz



SZ10, SZ11 SERIES ON-LOAD POWER TRANSFORMER

Features of Products

SZ10 Series 11kV class On-load voltage regulation is a voltage regulation method by which a transformer can change the voltage by changing the tap gear when operating under load. Power electronic component switches have the advantages of frequent switching, no spark and long service life, so they can be used as on-load tap-changer for distribution transformers.

Standards

GB1094.1-2013; GB1094.2-2013; GB1094.3-2013; GB1094.5-2008; GB/T 6451-2008; GB/T 1094.10-2003; JB/T 10088-2004 IEC60076; SANS 780 STANDARDS

Features of Products

1. Meet or exceeds ANSI/IEC, GB, SANS Standards
2. Safe Handling, Installation and Operation.
3. Attractive Modern appearance
4. Reasonable Structure
5. Fully-sealed
6. Higher system reliability
7. High security and reliability in operation
8. High capacity of overload and efficiency
9. Robust construction having excellent short circuit and thermal withstand capabilities

SZ10 series 11kV distribution transformer technical data

Rated capacity (kVA)	Voltage group (kV)		Vector group	Impedance voltage (%)	Loss(kW)		No-load current (%)	Weight(kg)			(L×B×H)(mm) Outline dimension	Gauge vertical/horizontal (mm)
	High-voltage	Low-voltage			No-load	Load		Machine weight	Oil weight	Gross weight		
200	13.8	0.4	Yyno	4	0.48	3.06	1.5	510	210	960	1440×780×1140	550/520
250					0.56	3.6	1.4	600	230	1105	1480×800×1200	650/550
315					0.67	4.32	1.4	690	260	1315	1600×860×1210	650/550
400					0.8	5.22	1.3	890	310	1570	1680×940×1300	650/550
500	13.2	0.415	Dyn11	4.5	0.96	5.21	1.2	920	310	1710	1660×1040×1310	750/600
630	11				1.2	7.65	1.1	1160	400	2050	1810×1140×1350	850/660
800	10.5				1.4	9.36	1.0	1430	430	2480	1890×1210×1380	850/660
1000	10				1.7	10.98	1.0	1530	540	2830	1950×1260×1510	850/660
1250	6	0.433	Dyn5	4.5	1.95	13.05	0.9	1300	610	3450	1960×1280×1660	850/660
1600					2.4	15.57	0.8	2200	700	4060	2350×1620×2020	850/700
2000					2.8	21.26	0.8	2460	800	4620	2460×1740×2050	820/820
2500					3.3	24.69	0.7	3070	910	5630	2650×1800×2100	1070/1070

Note: Tapping range of high-voltage: $\pm 5\%$, $\pm 2 \times 2.5\%$; Frequency: 50Hz

SZ11 series 11kV distribution transformer technical data

Rated capacity (kVA)	Voltage group (kV)		Vector group	Impedance voltage (%)	Loss(kW)		No-load current (%)	Weight(kg)			(L×B×H)(mm) Outline dimension	Gauge vertical/horizontal (mm)
	High-voltage	Low-voltage			No-load	Load		Machine weight	Oil weight	Gross weight		
200	13.8	0.4	Yyno	4	0.34	3.06	1.5	540	270	1110	1400×740×1190	550/520
250					0.40	3.60	1.4	640	290	1270	1420×790×1210	650/550
315					0.48	4.32	1.4	720	320	1500	1540×850×1240	650/550
400					0.57	5.22	1.3	940	370	1780	1590×940×1250	650/550
500	13.2	0.415	Dyn11	4.5	0.68	6.21	1.2	1040	370	1920	1650×1000×1350	750/600
630	11				0.81	7.65	1.1	1220	460	2280	1810×1200×1310	850/660
800	10.5				0.96	9.36	1.0	1500	500	2740	1860×1090×1500	850/660
1000	10				1.15	10.98	1.0	1610	520	3060	1910×1260×1570	850/660
1250	6	0.433	Dyn5	4.5	1.36	13.05	0.9	1880	700	3710	1960×1280×1740	850/660
1600					1.64	15.57	0.8	2290	780	4350	2330×1800×1910	850/700
2000					1.90	21.26	0.8	2560	900	4950	2580×1900×1950	820/820
2500					2.31	24.69	0.7	3170	1010	6020	2580×1940×2250	1070/1070

Note: It can supply voltage regulating range of $\pm 4 \times 2.5\%$ for high-voltage on-load regulation transformer



S11 SERIES 20KV CLASS DISTRIBUTION TRANSFORMER

Features of Products

20kV Distribution Transformers The abbreviation "change" refers to a static electrical appliance in a power distribution system that converts AC voltage and current according to the law of electromagnetic induction to transmit AC power. In some areas, power Transformers with a voltage level below 20 kV are called "distribution Transformers" or "blending" for short. The installation of "matched" places and places is both a substation. Distribution Transformers should be installed on the column or open floor installation.

Standards

GB1094.1-2013; GB1094.2-2013; GB1094.3-2013; GB1094.5-2008; GB/T 6451-2008; GB/T 1094.10-2003; JB/T 10088-2004 IEC60076; SANS 780 STANDARDS

Features of Products

1. Meet or exceeds ANSI, IEC, GB, SANS Standards
2. Safe Handling, Installation and Operation.
3. Attractive, Modern appearance
4. Reasonable Structure
5. Fully-sealed
6. Higher system reliability
7. High security and reliability in operation
8. High capacity of overload and efficiency
9. Robust construction having excellent short circuit and thermal withstand capabilities

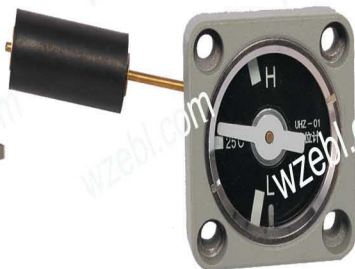
Transformer normal service conditions

1. The height above the sea level is below 1000m;
2. Ambient temperature;
3. Highest air temperature +40°C ;
4. Highest daily average air temperature+30°C ;
5. Highest annual average air temperature +20°C ;
6. Lowest outdoor air temperature -25°C ;

S11 series 20kV distribution transformer technical data

Rated capacity (kVA)	Voltage group (kV)		Vector group	Impedance voltage (%)	Loss (W)		No-load current (%)	Weight(kg)			Outline dimension (L×B×H)(mm)	Gauge vertical/horizontal (mm)
	High-voltage	Low-Voltage			No-load	Load		Machine weight	Oil weight	Gross weight		
50	24	0.4	Yyn0	5.5	0.17	1.15	2.0	200	145	465	920×610×1000	450/380
100					0.23	1.92	1.8	330	165	635	920×680×1100	550/450
125					0.27	2.26	1.7	395	185	745	960×780×1120	550/470
160					0.29	2.69	1.6	505	205	885	1160×710×1180	550/520
200					0.34	3.16	1.5	580	225	995	1190×730×1190	550/520
250					0.41	3.76	1.4	695	245	1130	1280×820×1210	650/550
315					0.49	4.53	1.4	745	260	1285	1380×910×1240	650/550
400					0.58	5.47	1.3	865	305	1500	1430×950×1320	650/550
500					0.69	6.58	1.2	985	335	1710	1520×1020×1360	750/600
630					0.83	7.87	1.1	1135	385	2010	1680×1150×1380	850/660
800					0.98	9.41	1.0	1335	415	2315	1810×1280×1430	850/660
1000					1.15	11.54	1.0	1655	515	2985	1840×1290×1540	850/660
1250					1.4	13.94	0.9	1890	630	3490	1850×1300×1730	850/660
1600					1.7	16.67	0.8	2220	710	4015	1920×1350×1790	850/700
2000					2.18	20.43	0.8	2530	730	4425	2020×1770×2040	320/820
2500					2.56	21.85	0.8	3165	795	5260	2080×1800×2130	1070/1070

Note: Tapping range of high-voltage: ±5%, ±2×2.5%; Frequency: 50Hz



Website: www.wzebl.com

Tel: 86-577-27885177

Ad: No. 10, Huxin Road, Liushi, Yueqing, Wenzhou, Zhejiang, China.

Email: wzebl@wzebl.com

Fax: 86-577-27885155

